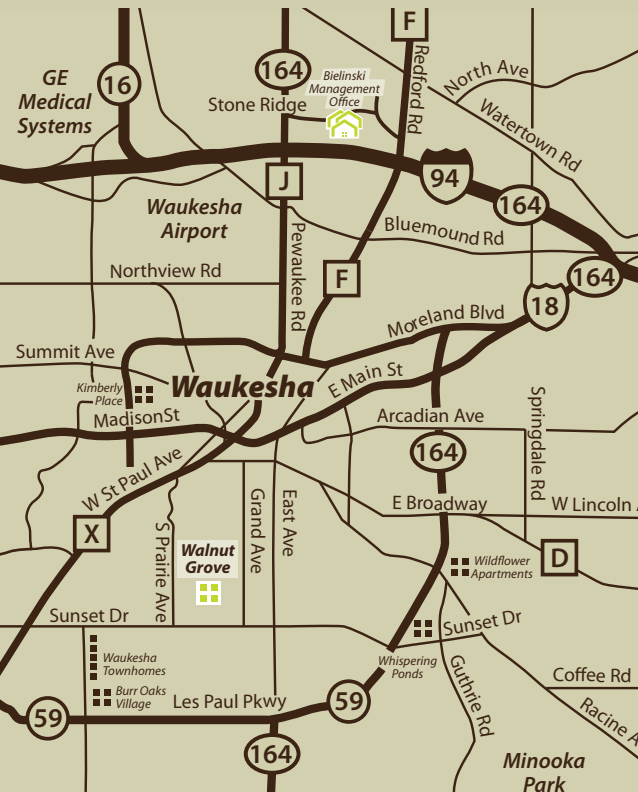


Walnut Grove



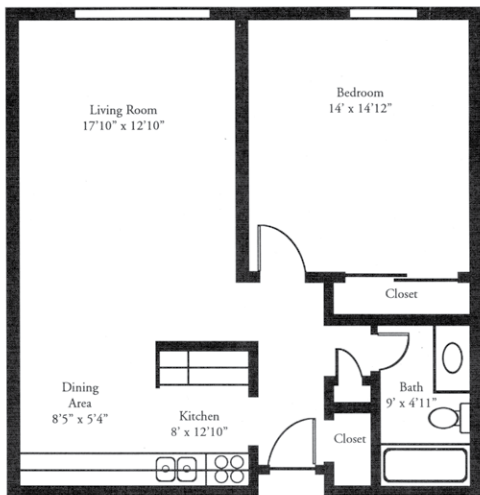
Apartments

Walnut Grove is situated in a quiet residential neighborhood close to historic downtown Waukesha. This peaceful setting is convenient to shops parks and restaurants. The affordable price and comfortable design make Walnut Grove a home that will fit your needs both now and in the future!

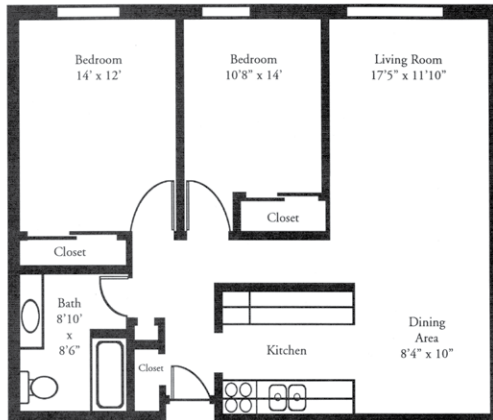


Walnut Grove Features

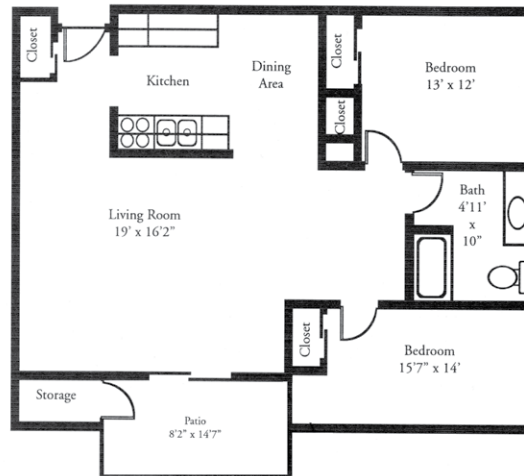
- Spacious 1 and 2 bedroom apartments
- Air conditioning
- Individually controlled electric heat
- Spacious kitchen with abundant cabinets and drawers
- Deluxe appliance package including refrigerator, range, dishwasher and food disposal
- Custom mini-blinds throughout
- Cable hookups and telephone jacks
- Convenient laundry room on first floor
- Private patio or balcony with select apartments
- Soft water
- Off street parking
- Deadbolt locks
- Intercom entry
- Additional storage room
- We welcome your cat
- Professional management team
- 24-hour emergency maintenance service



One Bedroom
670 sq. ft.



Two Bedroom
970 sq. ft.



Two Bedroom with Patio
1,025 sq. ft.

