

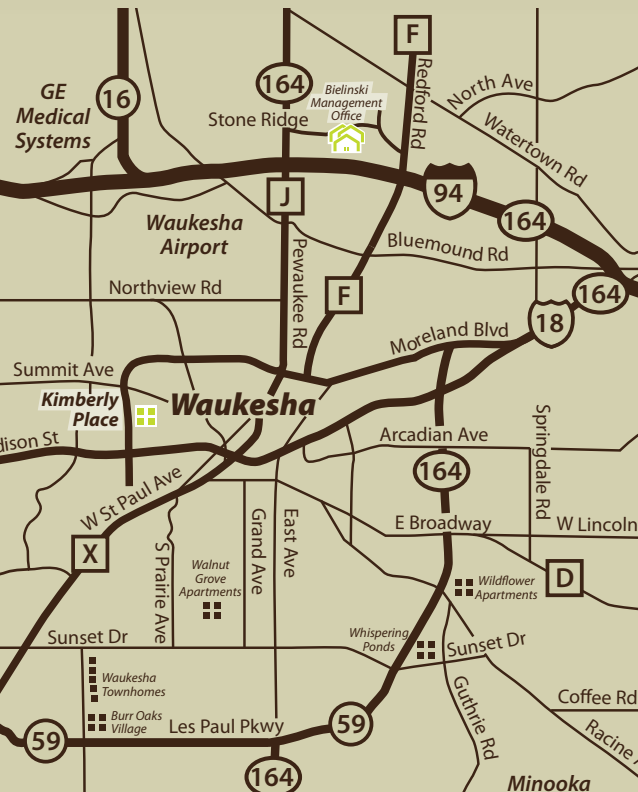
# Kimberly Place



## Apartments

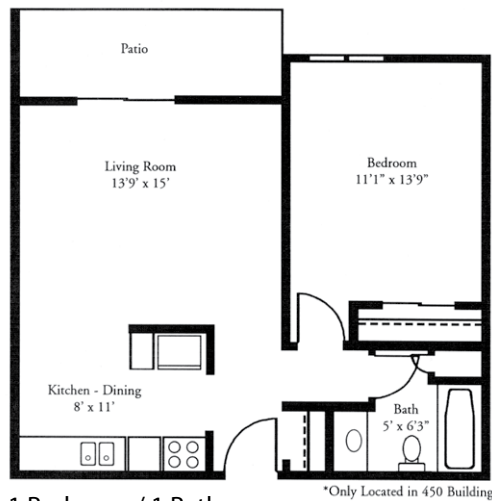
Tucked away in a quiet residential neighborhood Kimberly Place offers convenience and comfort at an affordable price.

Distinctive 1 and 2 bedroom apartments and a spacious kitchen with an abundance of cabinets make these apartment homes truly special. Centrally located to shopping, schools, churches, parks, pools and golf courses Kimberly Place has everything you need just minutes away!

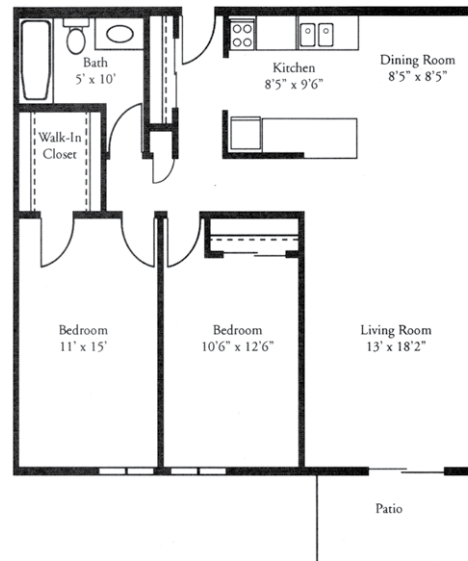


# Kimberly Place Features

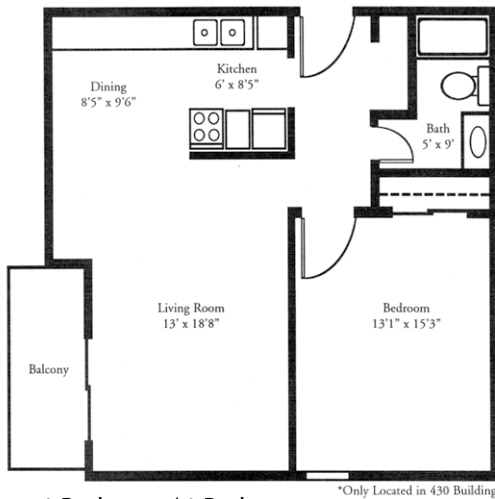
- Distinctive and spacious 1 and 2 bedroom apartments
- Heat included
- Air conditioning
- Spacious kitchen with abundant cabinets and drawers
- Deluxe appliance package including refrigerator, range dishwasher and food disposal
- Custom mini-blinds and vertical blinds throughout
- Multiple cable hookups and telephone jacks
- Convenient laundry room Private patio or balcony
- Deadbolt locks
- Soft water
- Intercom entry
- Elevator service in Building 430
- Optional heated underground parking
- Additional storage rooms
- We welcome your cat
- Professional management team
- 24-hour emergency maintenance service



1 Bedroom / 1 Bath  
625 sq. ft.



2 Bedroom with Walk-in Closet  
up to 969 sq. ft.



1 Bedroom / 1 Bath  
840 sq. ft.

