



WALNUT GROVE

Walnut Grove is situated in a quiet residential neighborhood convenient to shops, parks and restaurants. The affordable price and comfortable design make Walnut Grove a home that will fit your needs both now and in the future!



1212 & 1216 S Grand Ave, Waukesha, WI 53186
1 & 2 bedroom apartments available

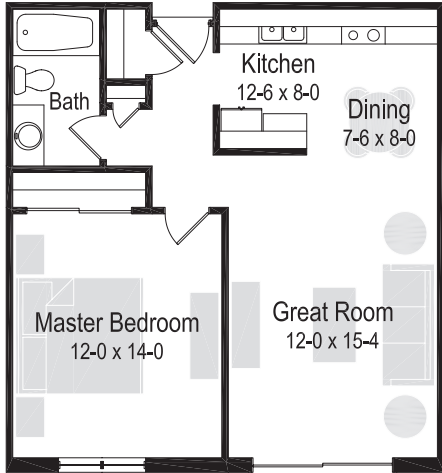
BIELINSKI[®]
— MANAGEMENT —

262.547.6697 | bielinski.com

APARTMENTS

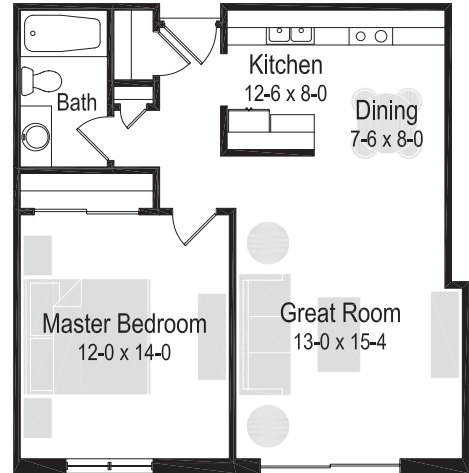


1212 & 1216 S Grand Ave, Waukesha, WI 53186
1 & 2 bedroom apartments available



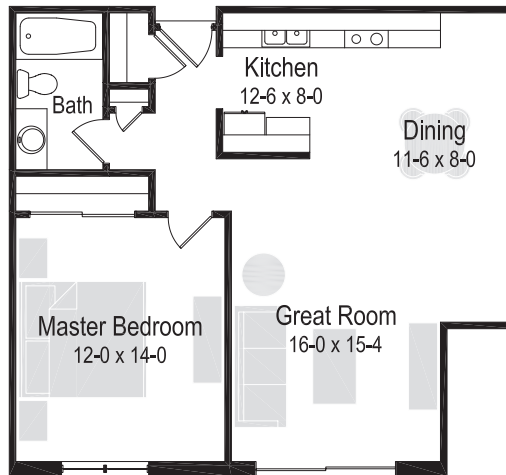
1 Bedroom/1 Bath | 675 Sq. Ft

RENT \$ _____



1 Bedroom/1 Bath | 685 Sq. Ft

RENT \$ _____



1 Bedroom/1 Bath | 750 Sq. Ft

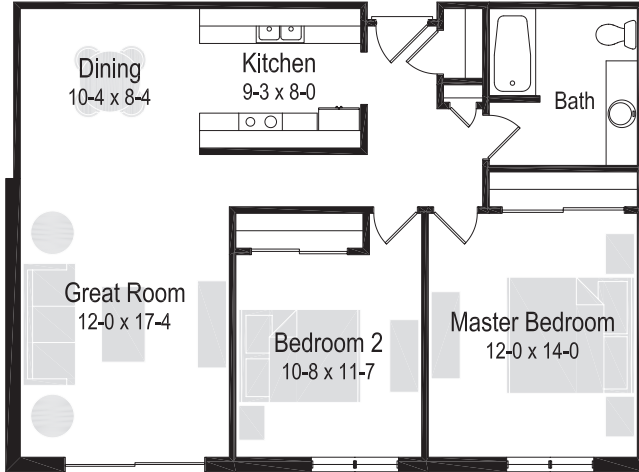
RENT \$ _____



APARTMENTS

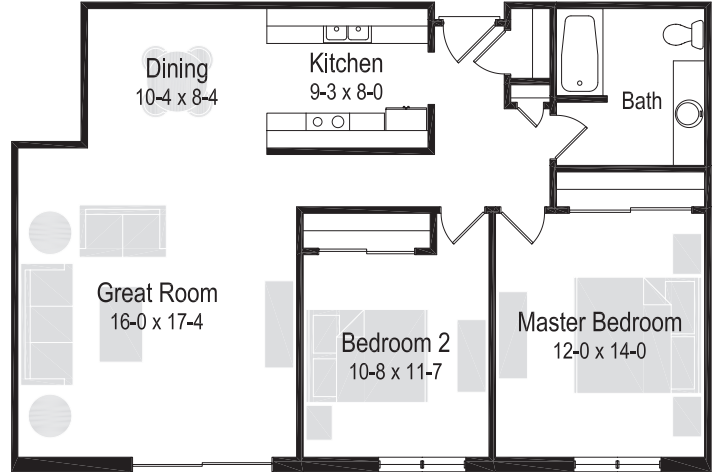


1212 & 1216 S Grand Ave, Waukesha, WI 53186
1 & 2 bedroom apartments available



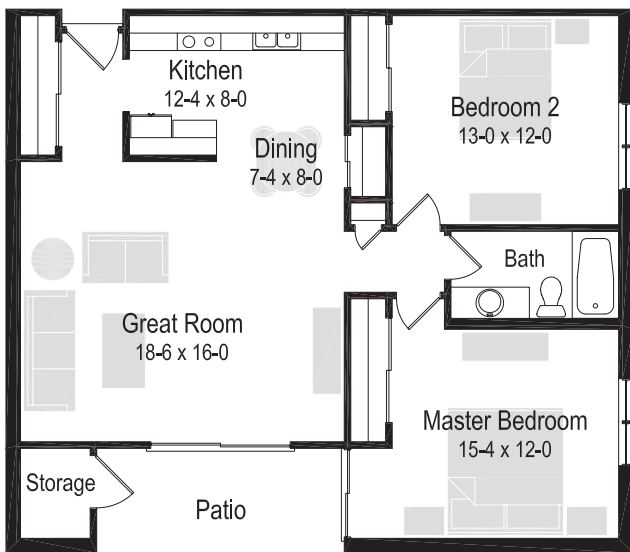
2 Bedroom/1 Bath | 980 Sq. Ft

RENT \$ _____



2 Bedroom/1 Bath | 1,050 Sq. Ft

RENT \$ _____



2 Bedroom/1 Bath | 1,035 Sq. Ft

RENT \$ _____

AMENITIES

- Spacious 1 and 2 bedroom apartments
- Air conditioning
- Individually controlled electric heat
- Spacious kitchen with abundant cabinets and drawers
- Deluxe appliance package including refrigerator, range, dishwasher and food disposal
- Mini-blinds throughout
- Cable hookups and telephone jacks
- Convenient laundry room on first floor
- Private patio or balcony with select apartments
- Soft water
- Off street parking
- Deadbolt locks
- Intercom entry
- Additional storage room
- We welcome your cat
- Professional management team
- 24-hour emergency maintenance service

